

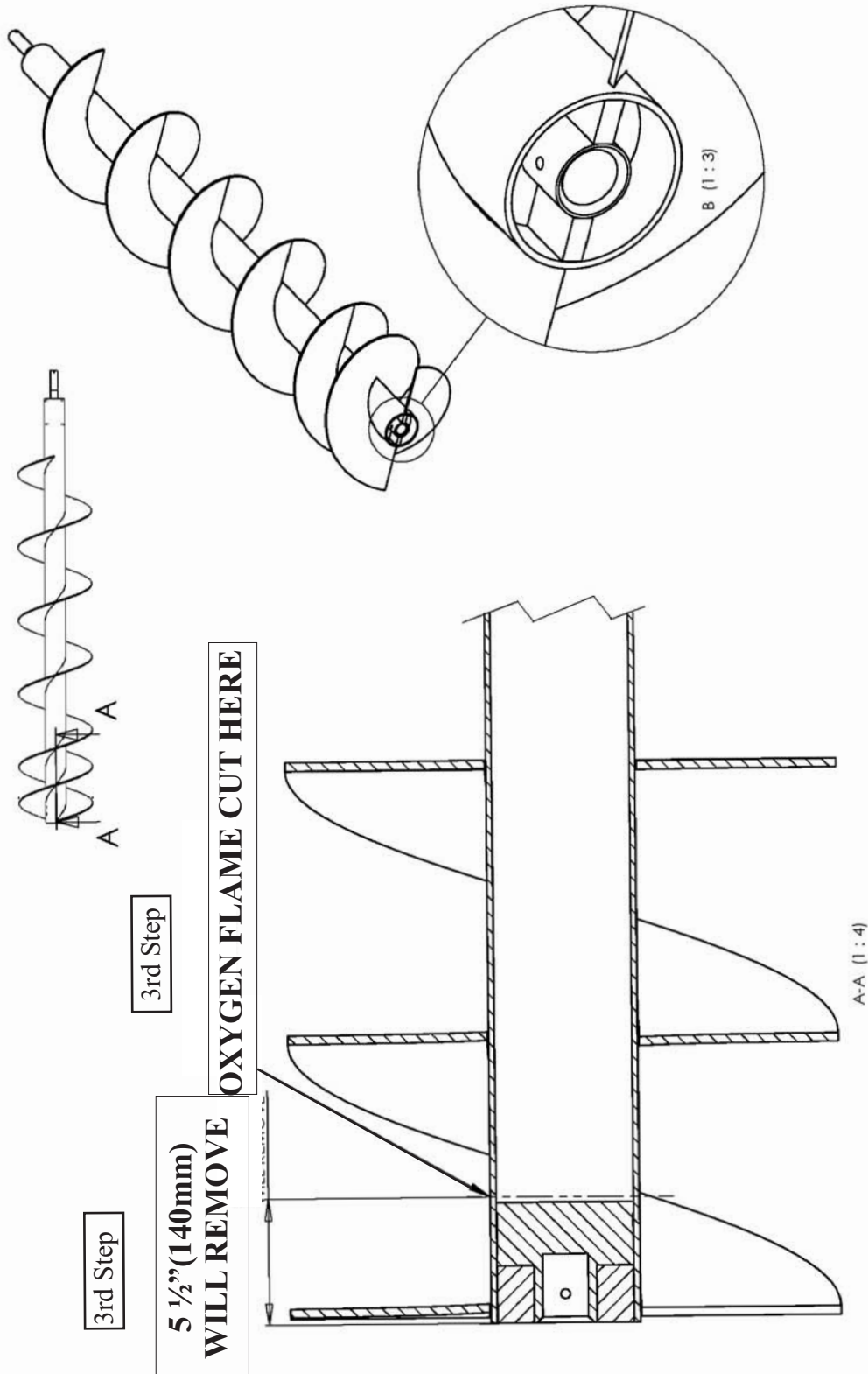
# Grain Cart Vertical Auger Coupler



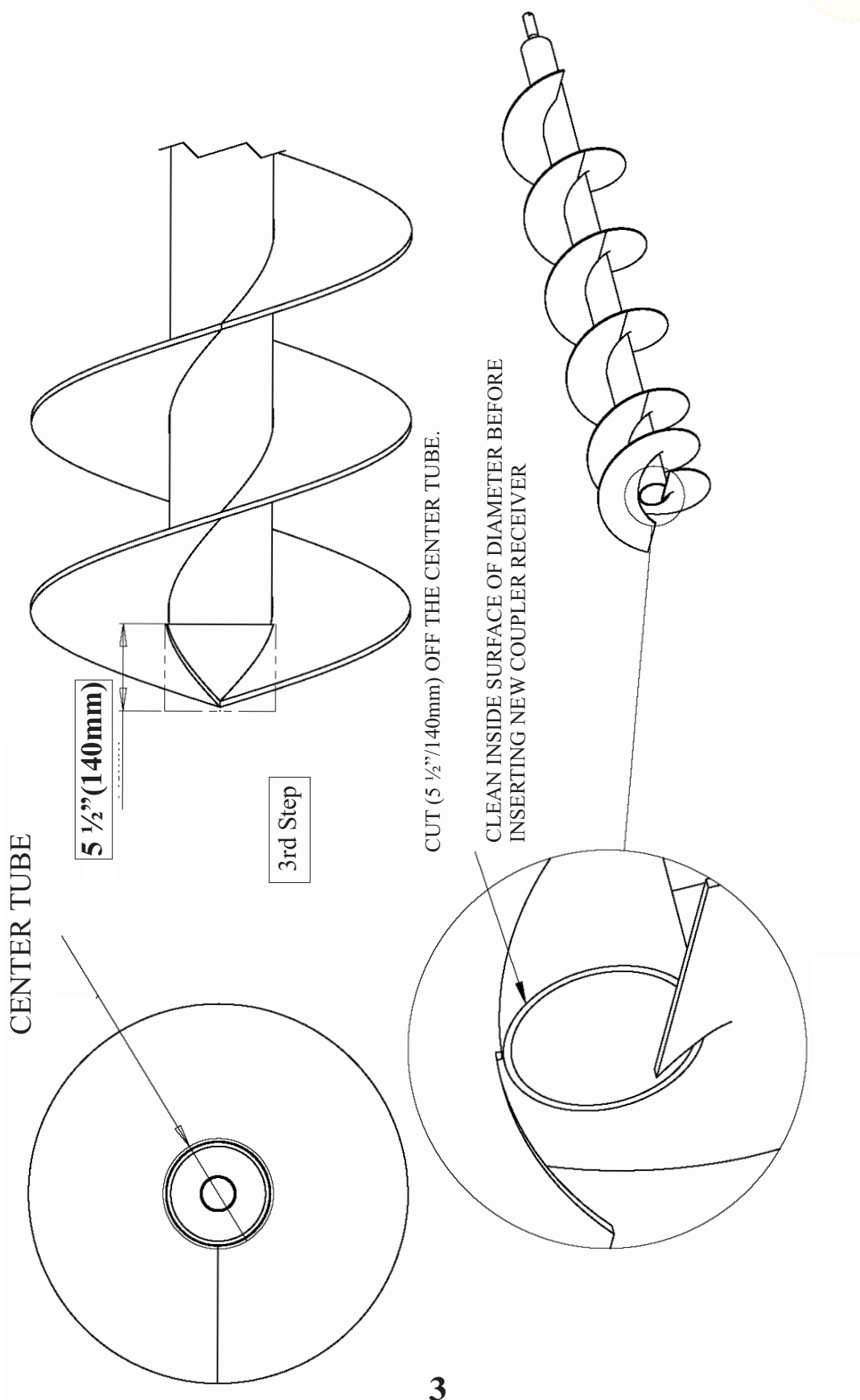
## Upper Vertical Auger Conversion

1. Position the upper vertical auger housing so that it is parallel to the ground.
2. On the upper end of auger, clamp auger so that roll pin is tight to spacers. Hold until finished working.
3. On the lower end of auger, cut the center tube back from the face by **5 ½" (140mm)**. Grind surfaces smooth especially inner portion of tube.
4. Assemble the drive coupler to the replacement receiver with the four, ½" bolts provided.
5. Push the complete drive coupler assembly into the tube until the tooth tip of the new drive coupler is protruding out of the housing by **2 1/8" (54 mm)**.
6. Tack weld in three places before final welding.

# Grain Cart Vertical Auger Coupler



# Grain Cart Vertical Auger Coupler



## Grain Cart Vertical Auger Coupler



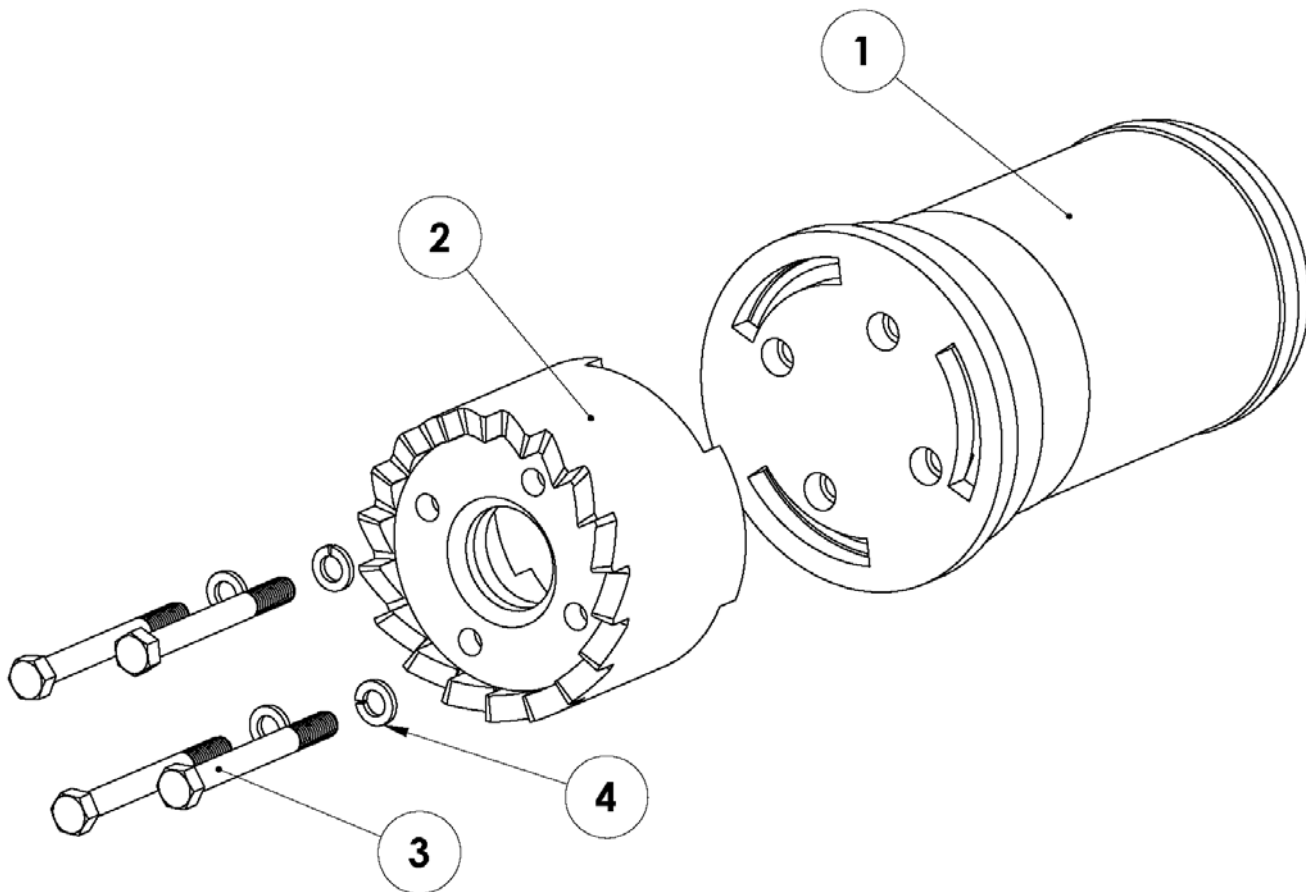
## Grain Cart Vertical Auger Coupler



## Grain Cart Vertical Auger Coupler

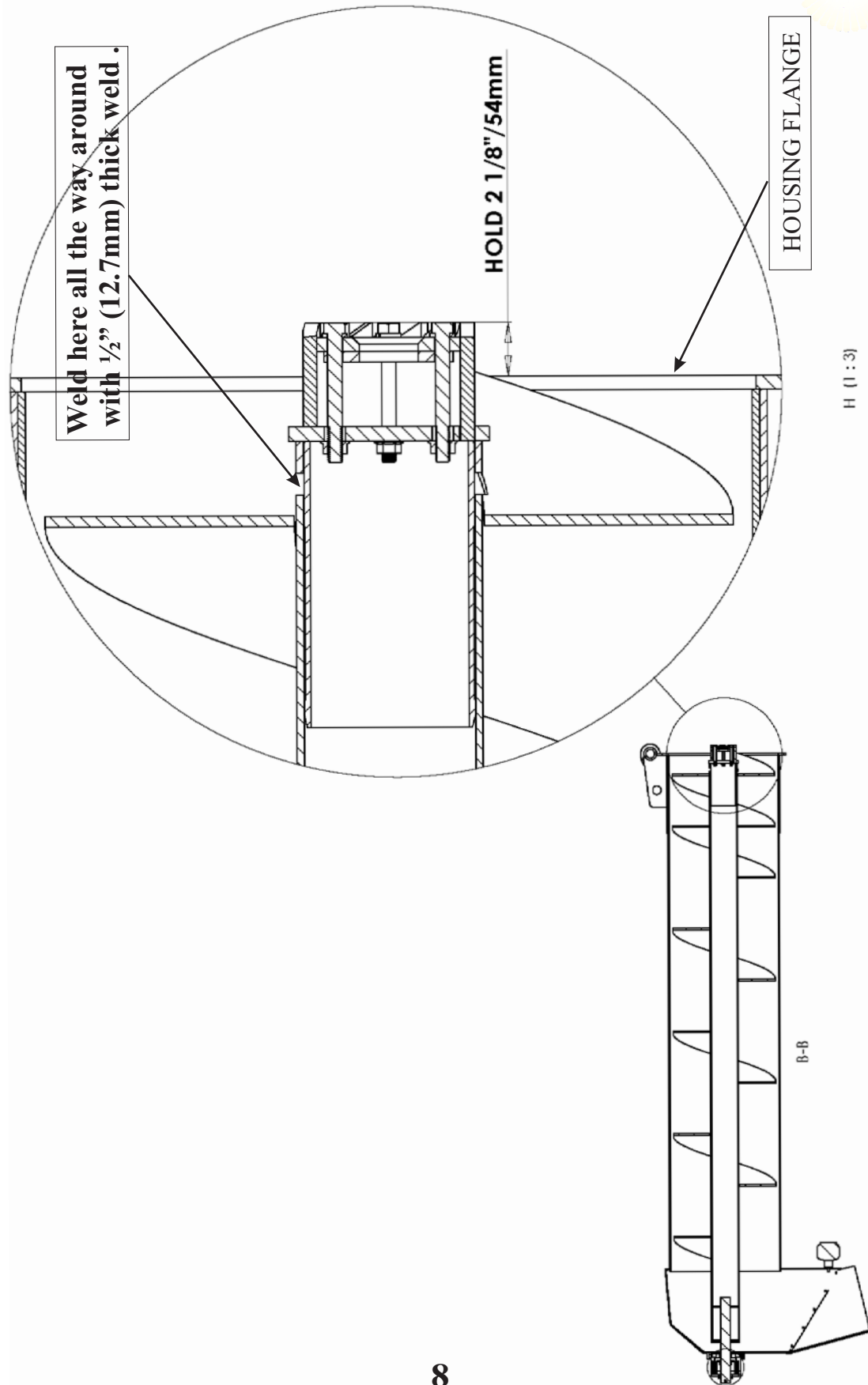


## Grain Cart Vertical Auger Coupler



ITEM NO.	QTY.	PART NO.	DESCRIPTION
1	1	85035	UPPER VERTICAL AUGER COUPLER RECEIVER ADAPTOR
2	1	85095	UPPER VERTICAL AUGER COUPLER
3	4	1261	BOLT HEXHEAD .50" x 4.50" UNC GRD 5
4	4	1638	LOCK WASHER .50"

# Grain Cart Vertical Auger Coupler



## Grain Cart Vertical Auger Coupler



## Grain Cart Vertical Auger Coupler

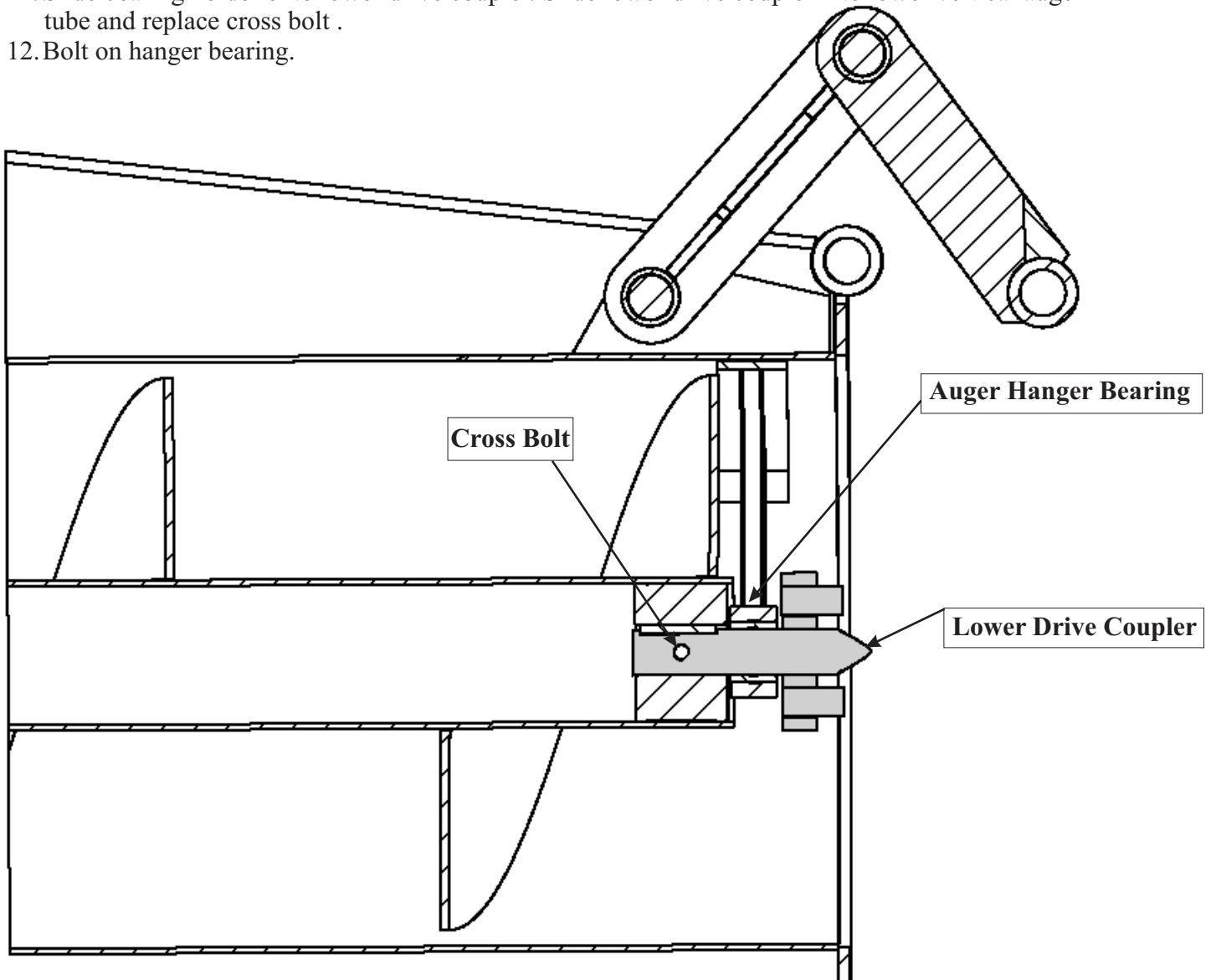


# Grain Cart Vertical Auger Coupler

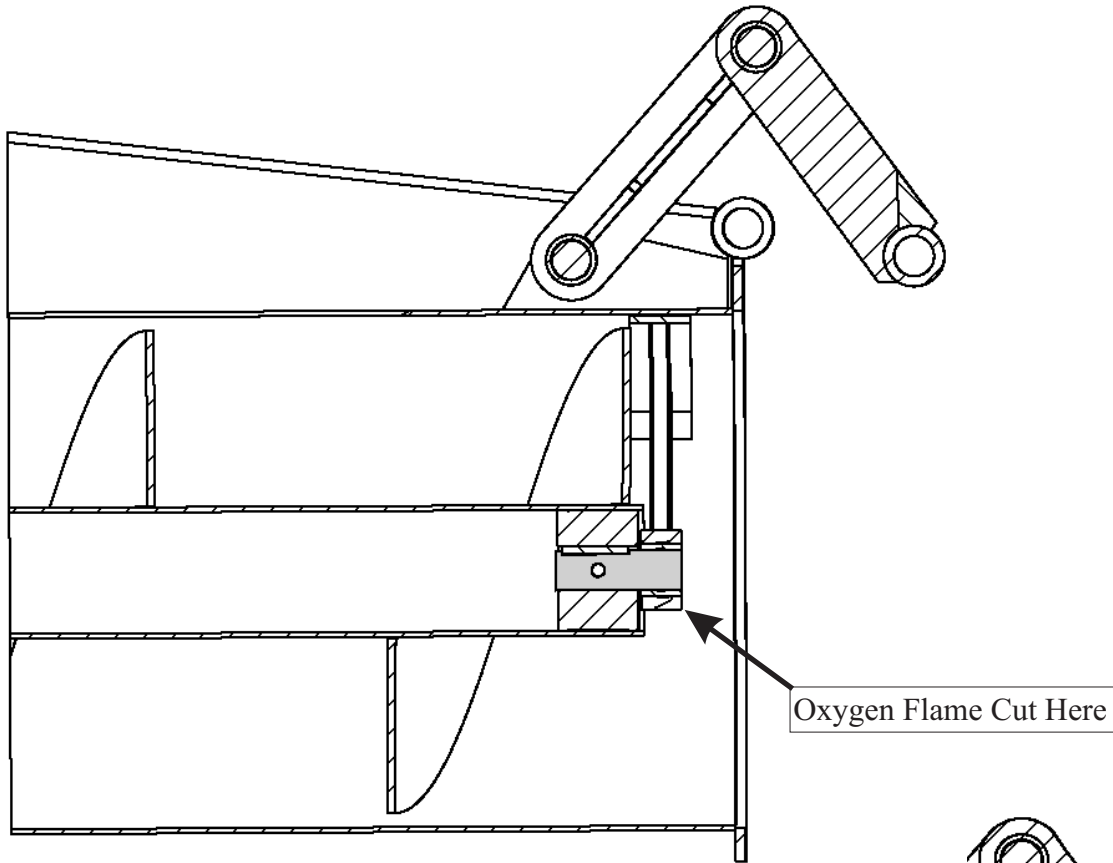


## Lower Vertical Auger Rework

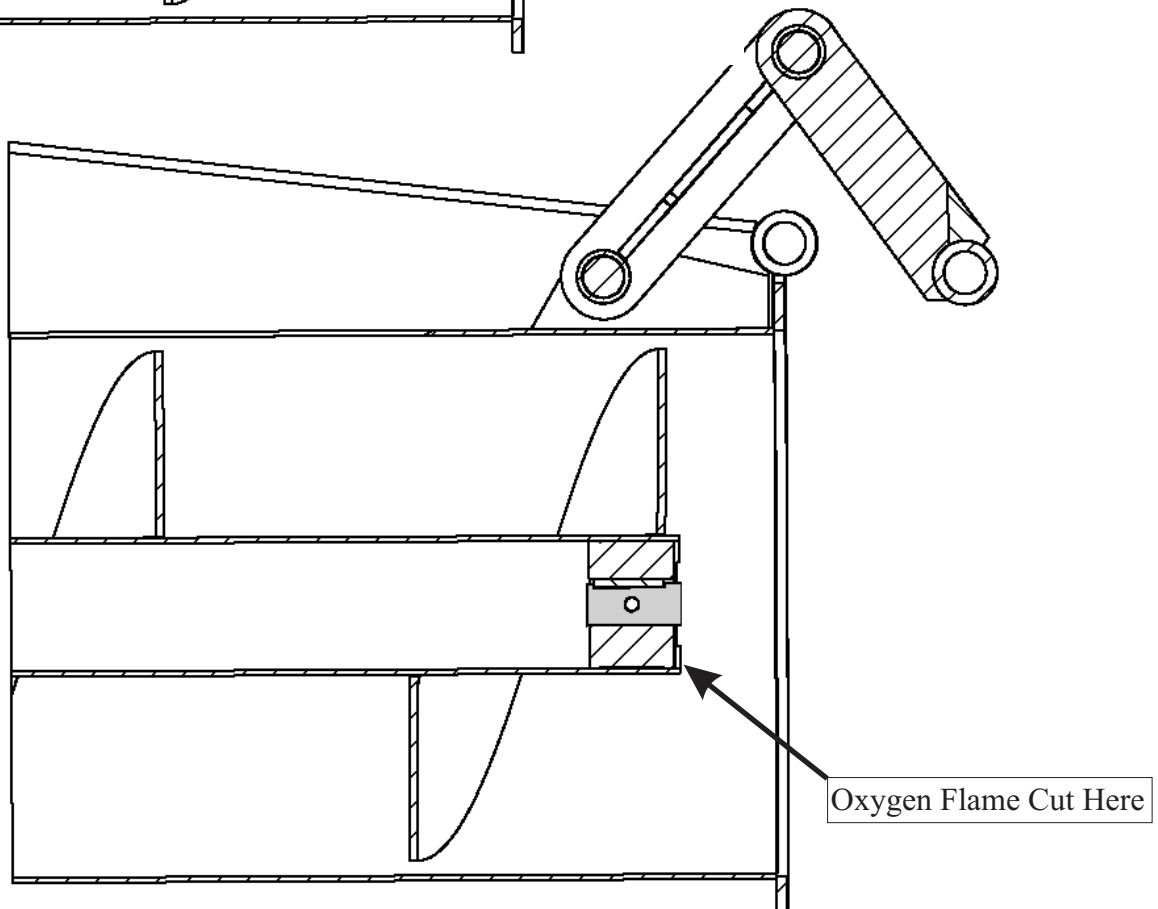
1. Remove cross bolt from lower vertical auger.
2. Pull lower drive coupler out.
3. If drive coupler will not pull out, then **oxygen flame cut lower drive coupler off behind plates.**
4. Grind shaft smooth to allow hanger bearing to slide off.
5. Remove ½" bolts from auger hanger bearing to lower vertical auger housing.
6. Slide auger hanger bearing off.
7. **Oxygen flame cut the shaft off 3/8"(9.6mm) away from the lower vertical auger tube.**
8. Grind a large chamfer on the end of shaft.
9. Drive the shaft into the lower vertical auger tube with a punch to minimize flaring of shaft.
10. Clean and de-burr hole so that the new lower drive coupler will slide in freely.
11. Slide bearing holder onto lower drive coupler. Slide lower drive coupler into lower vertical auger tube and replace cross bolt .
12. Bolt on hanger bearing.



# Grain Cart Vertical Auger Coupler



Oxygen Flame Cut Here



Oxygen Flame Cut Here

# Grain Cart Vertical Auger Coupler



## Vertical Auger Engagement Information

### INSTALLATION INSTRUCTIONS

#### UPPER PORTION

Raise upper vertical auger housing as shown in picture. Measure distance from tooth tip to vertical auger housing flange, the measurement should be **2 1/8"-2 3/8" or (54-60mm)**. If dimension is off, lower upper vertical auger housing back down to saddle and add or remove shims to adjust the offset.

#### LOWER PORTION

Measure distance from tooth tip to lower vertical housing flange, the measurement should be **1 3/8"-1 1/2" or (35-38mm)**.

