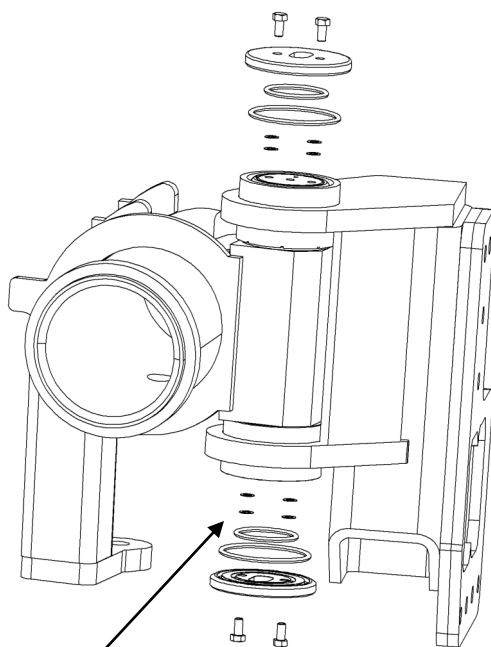


ENGINEERING BULLETIN

King Pin Grease Cap Clearance

Use ARBOR SHIM .37 X .62 X .020 to maintain a .04" gap between king pin bottom cover P#80957 and king pin bushing assembly. Two shims are normally used. If this is not adequate add equal amounts of shims two at a time until bolts remain tight.



ARBOR SHIM .37 X .62 X .020

